

IN THIS ISSUE

1. This months news
2. Article - Esoteric healing and Acupuncture
3. Power estimation predicts specific function action of Acupuncture: an fMRI study.
4. Upcoming Events Calendar for September / October 2011

This month in the news..

Welcome to the September Issue of the Acupuncture.com.au monthly newsletter.

If you wish to contribute a story or article about Acupuncture or Traditional Chinese Medicine please contact the Acupuncture.com.au team through the web.

FEATURED ARTICLE—Esoteric healing and Acupuncture

by Alison Clarke

'Let the healer train himself to know the inner stage of thought or of desire of the one who seeks help. He can therefore know the source from which the trouble comes.'

Djwhal Khul

To be in the presence of an amazing teacher, who walks his talk is a humbling honour. I met Dr Mikio Sankey Ph.D., L.Ac. when I visited Los Angeles in 2009. I had been reading his books and practicing his work. As a yoga student, teacher, shiatsu practitioner and healer for many years, I had a deep interest in expanding consciousness, building a 'rainbow bridge', and understanding the practices of the ancients. I also had a deep yearning to cross reference good practice of many disciplines.

I had studied Djwhal Khul, the ascended Tibetan Master, scribed so profoundly by Alice Bailey and I was aware that there was 'truth' hidden in this and other works. However, I could not find the confidence or the tools to move this 'truth' from my fragmented academic understanding, to clarity, duplicable form and sensation with discernable results. I did find this possibility in the books, teachings and practice of Dr Sankey.

Dr Sankey is an acupuncturist, naturopathic physician and iridologist who has been studying and integrating ancient teachings for more than 35 years. Since 1995 he has been developing esoteric acupuncture to address the complex imbalances of people today - imbalances on the physical, etheric, astral, mental, causal, buddhic, atmic and monadic planes.

He was recognized as the 2006 Acupuncture Author of the Year by the National Acupuncture and Oriental Medicine Organization known as AAOM for the book Sea of Fire - Cosmic Fire, Esoteric Acupuncture Vol. IV. A collaborative of various Acupuncture Organizations honoured Dr Sankey in the listing AOM Pioneers and Leaders, 1982 to 2007. A listing that honours those leaders who were responsible for shaping the direction of Acupuncture and Oriental Medicine in the first twenty-five years of practice in America.

The focus is to harmonise and balance energy centres known as chakras (especially the Heart chakra) and to raise the level of one's consciousness. Esoteric Acupuncture requires that one opens the Heart chakra to rely on the higher intuitive power of the Heart and Head chakras, rather than merely relying on the academic left brain. His work encompasses New Encoded Patterns working with primarily the Ghost, Wind, Heaven Points which enables an understanding and experience of esoteric qi and expanding consciousness. This work will touch you're your heart.

Dr Sankey third visit to Australia is in October. Presenting workshops of Foundation and Level 2 in Esoteric Acupuncture and Support the Mountain - Nutrition for Higher Consciousness . Contact Alison Clarke, alison@intofreedom.com.au, phone (03) 9761 1509 mobile 0402 845 105 or China Books in Melbourne or Sydney.

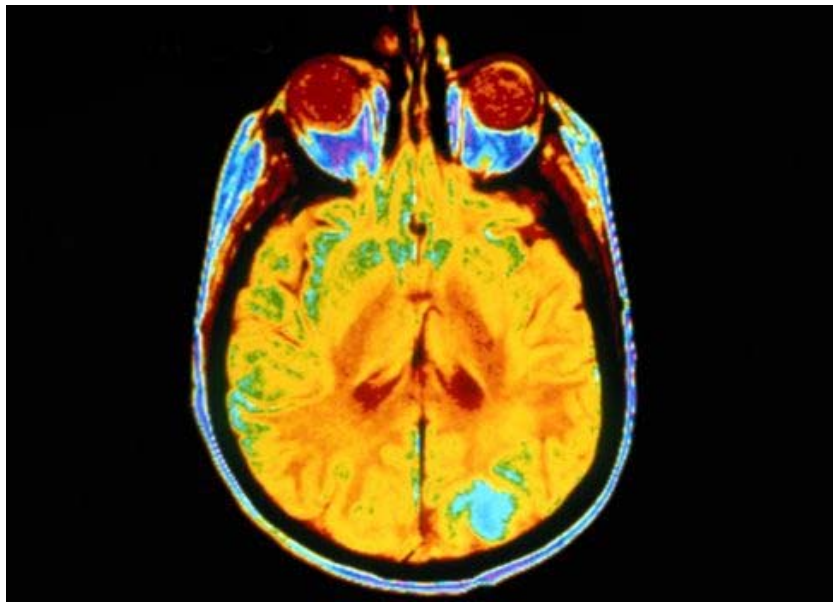
23/08/2011—Power estimation predicts specific function action of Acupuncture: an fMRI study.

PURPOSE:

The purpose was to investigate the distinct pattern of brain response induced by electroacupuncture stimulation (EAS) related to sustained acupuncture effects.

MATERIAL AND METHODS:

Twenty-eight healthy volunteers were enrolled and randomized into two groups. According to grouping, volunteers were separately treated by EAS at GB37 (Guangming) or KI8 (Jiaoxin) during functional magnetic resonance imaging. Differences in acupuncture effects between the groups were tested by the power estimation approach.



RESULTS:

Spatial patterns of the whole brain power were different in the periaqueductal gray, occipital cortex (OC) and temporal cortex when induced by EAS at GB37 and KI8. Moreover, the differences in the sustained effects between these two acupoints were also identified and associated with the OC, dorsolateral prefrontal cortex, medial prefrontal cortex, anterior cingulate cortex and insula.

CONCLUSION:

Electroacupuncture stimulation induced different power fluctuation patterns related to GB37 and KI8. We suggest that these findings might be attributed to the specific function action of these acupoints.

Country: China | **Institute:** Life Science Research Center, School of Life Science and Technology, Xidian University, Xi'an, Shaanxi 710071, China. | **Author(s):** Liu P, Zhou G, Yang X, Liu J, Sun J, Dong M, Yuan K, Zhang Y, Qin W, Tian J. | **Journal:** Magn Reson Imaging. 2011 Aug 15.

Upcoming Events Calendar for September/October 2011

Sep 10 - Webinar - Gastrointestinal and Hepatic Disorders: Pulse Dx & Herbal Tx

When: 9.00am, Pacific Time - 6.00pm, Pacific Time, Where:

Contact: Donna Chow on (866) 905-6887 or info@elotus.org

Oct 1 - Webinar - Chronic Fatigue and Chinese Herbal Medicine

When: 9.00am, Pacific Time - 6.00pm, Pacific Time, Where:

Contact: Donna Chow on (866) 905-6887 or info@elotus.org

Oct 1 - Brunswick - Esoteric Acupuncture Foundation Level 1

When: 9am - 5pm, Where: Aust Shiatsu College 103 Evans Street

Contact: Alison Clarke on 03 9761 1509 or alison@intofreedom.com.au or info@chinabooks.com.au

This is a multi-day event ending on the 02/10

Oct 2 - Webinar - TCM Tx of Irregular Menstruation and Menopausal Disorders

When: 9.00am, Pacific Time - 6.00pm, Pacific Time, Where:

Contact: Donna Chow on (866) 905-6887 or info@elotus.org

Oct 10 - Hangzhou, China - China Tour 2011

When: 8.30 - 4.00, Where: 966 YuHangFang Rd.

Contact: James Spears on (01) 7072067473 or james.spears@ihsociety.com

This is a multi-day event ending on the 21/10

Oct 15 - Webinar - Treatment of Pain with Acu and Chinese Herbs: Upper Body

When: 9.00am, Pacific Time - 6.00pm, Pacific Time, Where:

Contact: Donna Chow on (866) 905-6887 or info@elotus.org

Oct 16 - Webinar - Integrative Internal Medicine Part II

When: 9.00am, Pacific Time - 6.00pm, Pacific Time, Where:

Contact: Donna Chow on (866) 905-6887 or info@elotus.org