



IN THIS ISSUE

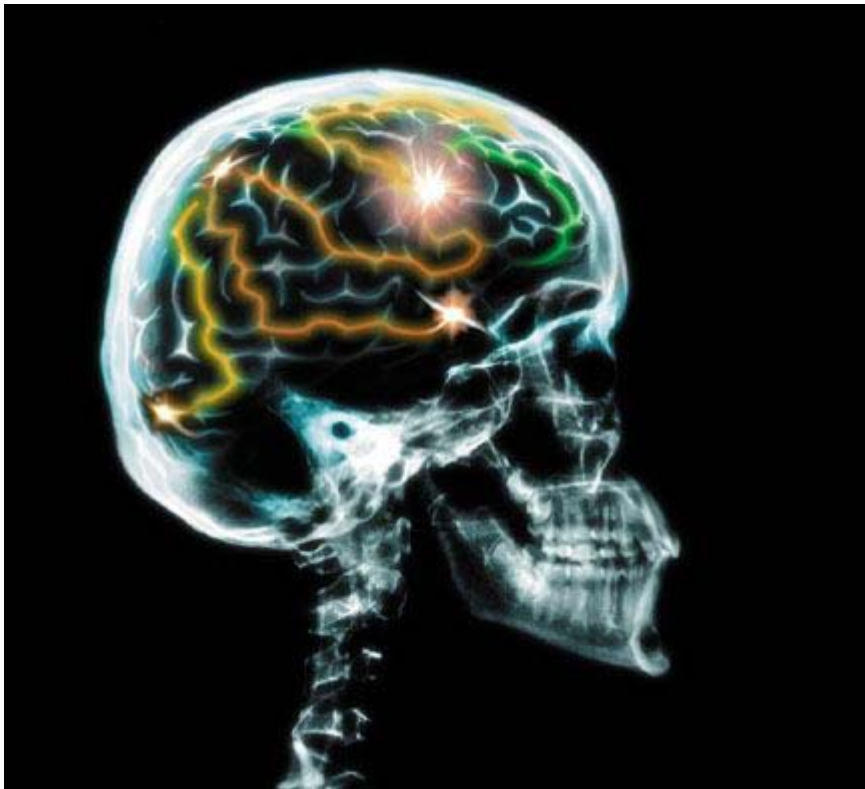
1. This month in the news.
2. Brain areas involved in acupuncture treatment on functional dyspepsia patients: a PET-CT study.
3. Events Calendar

This month in the news..

National registration of Acupuncture and Chinese Medicine is set to go forward. The Chinese medicine profession will be included in the national scheme from July 2012. You can read some comments about this on our discussion forums online..

Acupuncture.com.au is looking for contributors! Whether you are a student, practitioner or professional we require people to help promote Acupuncture through our newsletter. A small article, a small story.. Your views on Acupuncture? If you are interested in this opportunity please contact us.

Brain areas involved in acupuncture treatment on functional dyspepsia patients: a PET-CT study.



Neuroimaging studies on brain responses to acupuncture stimulations have received considerable attention recently. The majority of these studies are centered on healthy controls (HC) and neuropathy, while little work has addressed other disorders.

This study aimed to investigate the influence of acupuncture stimulations on brain activities in functional dyspepsia (FD) patients. Eight FD patients and eight healthy controls (HC) were involved in this study. Each HC received an ^{18}F -FDG PET-CT scan at baseline, while each patient received scans at baseline and after acupuncture stimulations. Manual acupuncture stimulations were performed at ST34 (Liangqiu), ST36 (Zusanli), ST40 (Fenglong) and ST42 (Chongyang) in FD patients. The images were analyzed with the Statistical Parametric Mapping software 2.0. Compared to HC, the FD patients showed a lower glycometabolism in the right orbital

gyrus, the left caudate tail and the cingulate gyrus, and a higher glycometabolism in the left inferior temporal gyrus ($p < 0.005$). After acupuncture stimulations, the FD patients showed a glycometabolism decrease in the postcentral gyrus and the cerebella, and an increase in the visual-related cortices ($p < 0.005$). The results suggest that the anterior cingulate cortex, the prefrontal cortices and the caudate tail involve in processing gastric perceptions in FD patients and that the deactivation of the primary somatosensory area and the cerebella is contributable to acupuncture stimulation, while activation of the visual-related cortex is a response to pain or acupoint actions.

Country: China

Institute: Acupuncture and Tuina School, Chengdu University of Traditional Chinese Medicine, Chengdu 610075, China. telepathy-zf@hotmail.com

Events Calendar for June 2009

27

Melbourne - Traditional Thai Massage

Contact: Enquires on 03 9576 1787

This is a multi-day event ending on the 28/06



acuneeds
AUSTRALIA

premium partner